



Ashleigh Terrace Road South, Bracknell, RG42 4DS

£495,000

Individual detached house of extremely spacious proportions complimented by a large and totally private rear garden. Approached via electric gates and a large driveway to double garage. A must for internal viewing in order to appreciate the vast amount of living space this property has to offer !!!

Entrance Hall:

Side aspect window, stairs to first floor, double radiator, laminate flooring

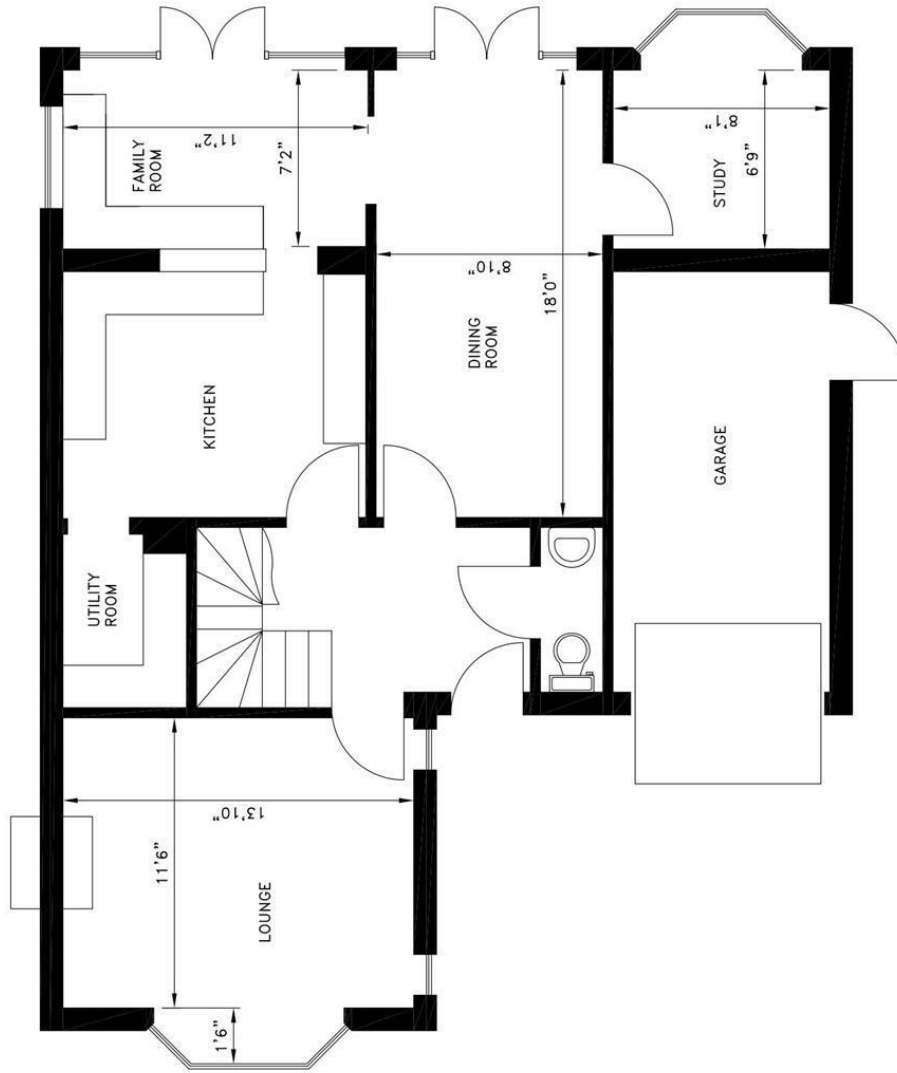
Living Room 24'9 x 16'1 (7.54m x 4.90m)

Double sealed unit glazed doors to patio and garden, side aspect window, double doors to;

Dining Room 15'5 x 12' (4.70m x 3.66m)



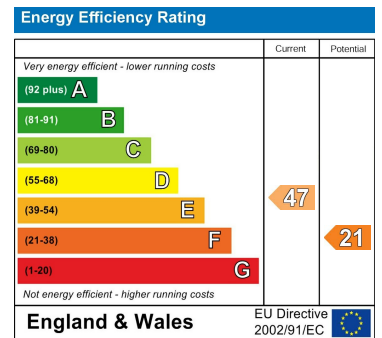
Floor Plan



Area Map



Energy Efficiency Graph



These particulars, whilst believed to be accurate are set out as a general outline only for guidance and do not constitute any part of an offer or contract. Intending purchasers should not rely on them as statements of representation of fact, but must satisfy themselves by inspection or otherwise as to their accuracy. No person in this firm's employment has the authority to make or give any representation or warranty in respect of the property.